

APG Products 101

Welcome to APG Cash Drawer! Within the next few pages, we'll introduce our line of products. For further information, download each specific training presentation from this training web site location.

- Introduction to APG's Cash Drawers
- Part Number Structure
- APG Integration Products
- APG Interfaces

The recognized
leader of superior
quality cash drawers

Visit us at:
www.apgcashdrawer.com

763.571.5000



Standard Duty vs. Heavy Duty

STANDARD DUTY

An affordable solution with many features found in more expensive drawers.

- Includes the Vasario line of Cash Drawers
- Low cost of Acquisition
- 1 Million Cycles
- Ball bearing wheels
- Reliable latch mechanism
- 2 year warranty
- Drawer status switch
- Media slots and non media options



VASARIO 1616

[VIEW PDF](#)



VASARIO 1416
PUSH BUTTON

HEAVY DUTY

Rugged and reliable series of cash drawers provides many years of trouble free operation.

- Includes the Series 100 and Series 4000 lines of Cash Drawers
- **Lifetime Limited Warranty*** for the Series 4000 cash drawer
- 5 year warranty* for the Series 100 cash drawer.
- Low cost of ownership
- 4 million designed life cycle
- Heavy duty ball bearing slides
- Reliable latch mechanism
- 4 function locks
- Media storage

*Does not apply to OEM products. Online registration required.



SERIES 100

[VIEW PDF](#)



SERIES 4000

[VIEW PDF](#)

The recognized leader of superior quality cash drawers

Visit us at:
www.apgcashdrawer.com

763.571.5000



APG CASH DRAWER®

Cash Drawer Products

Vasario

- Multiple till options
- 4 sizes to choose from
- 4 function lock
- Drawer status switch is standard
- MultiPRO®, Serial, USB Interface options



[View Vasario Brochure](#)

Vasario Manual

- 2 sizes available
- Push button operated
- 4 function lock
- Drawer status switch is standard
- MultiPRO®, Serial, USB Interface options



[View Vasario Brochure](#)

Series 100

- Narrow Footprint
- Heavy Duty Latch Mechanism
- Industrial grade steel ball bearing slides
- Injection-Molded Inner Drawer
- Provides coin roll storage adjustable media storage
- Four-Function Lock
- Adjustable Media Divider
- MultiPRO®, Serial, USB, and Parallel Interface options



[View Series 100 Brochure](#)

Series 4000

- Heavy Duty Latch Mechanism
- Industrial-Grade Steel Ball Bearing Slides
- Four-Function Lock
- Dual Beveled Media Slots
- 6 sizes to fit your specific needs
- Till options for most currencies
- MultiPRO®, Serial, USB, and Parallel Interface options



[View Series 4000 Brochure](#)

Flip Top

- Suitable for a variety of currencies
- Designed to save space and increase efficiency
- Lid opens so drawer doesn't project into the work area
- Reliable lid with spring mechanism
- Tested to 2 million cycles



[View Fliptop Brochure](#)

Podium

- Fits above scanner in grocery installation
- Short depth of 11.5"
- A flip up base design provides for easy service to the scanner
- Dual media slots



[View POS Podium Brochure](#)

The recognized leader of superior quality cash drawers

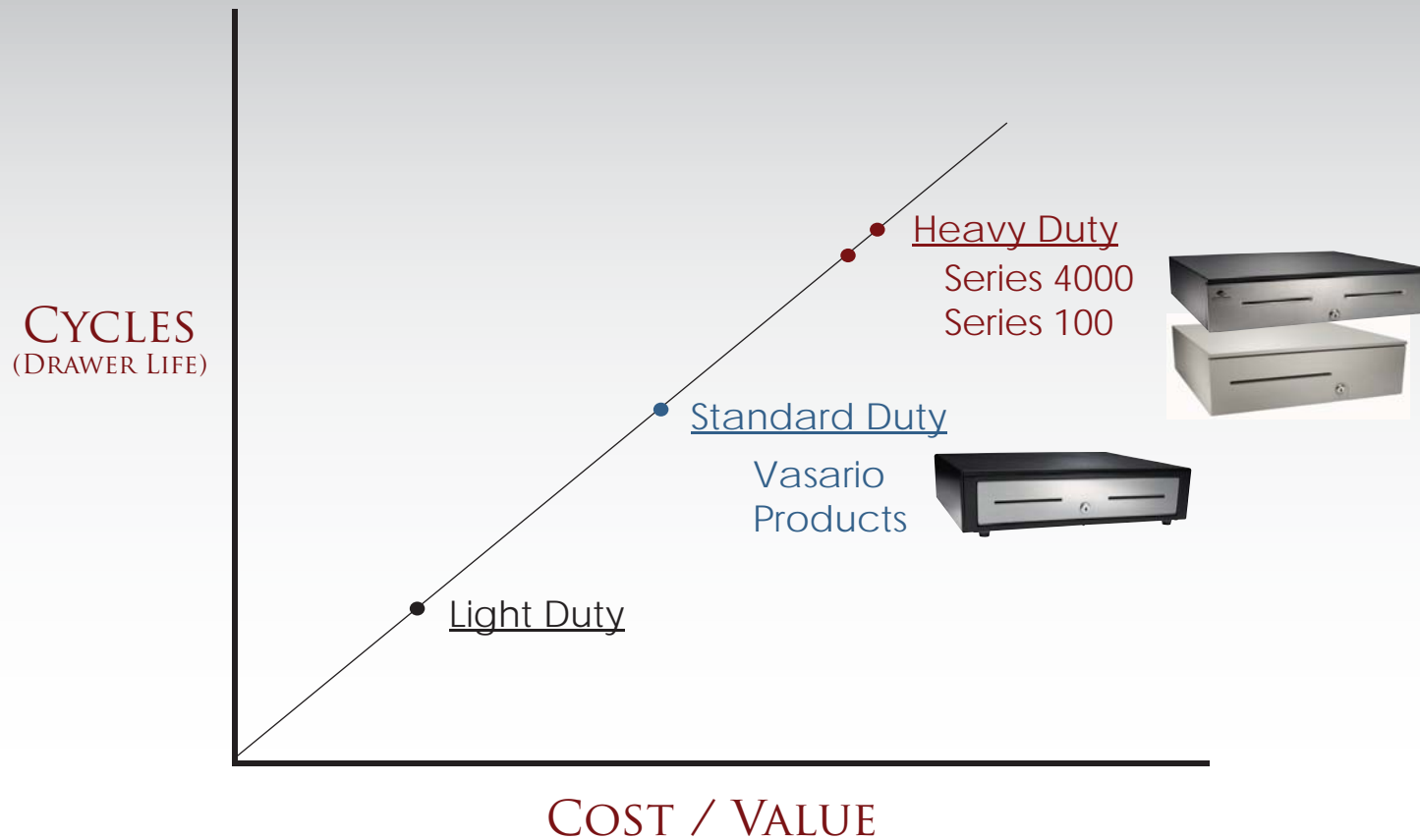
Visit us at:
www.apgcashdrawer.com

763.571.5000


APG CASH DRAWER®

Standard Duty vs. Heavy Duty

You can see the correlation between a drawer's number of cycles and the cost / value of a cash drawer.



The recognized leader of superior quality cash drawers

Visit us at:
www.apgcashdrawer.com

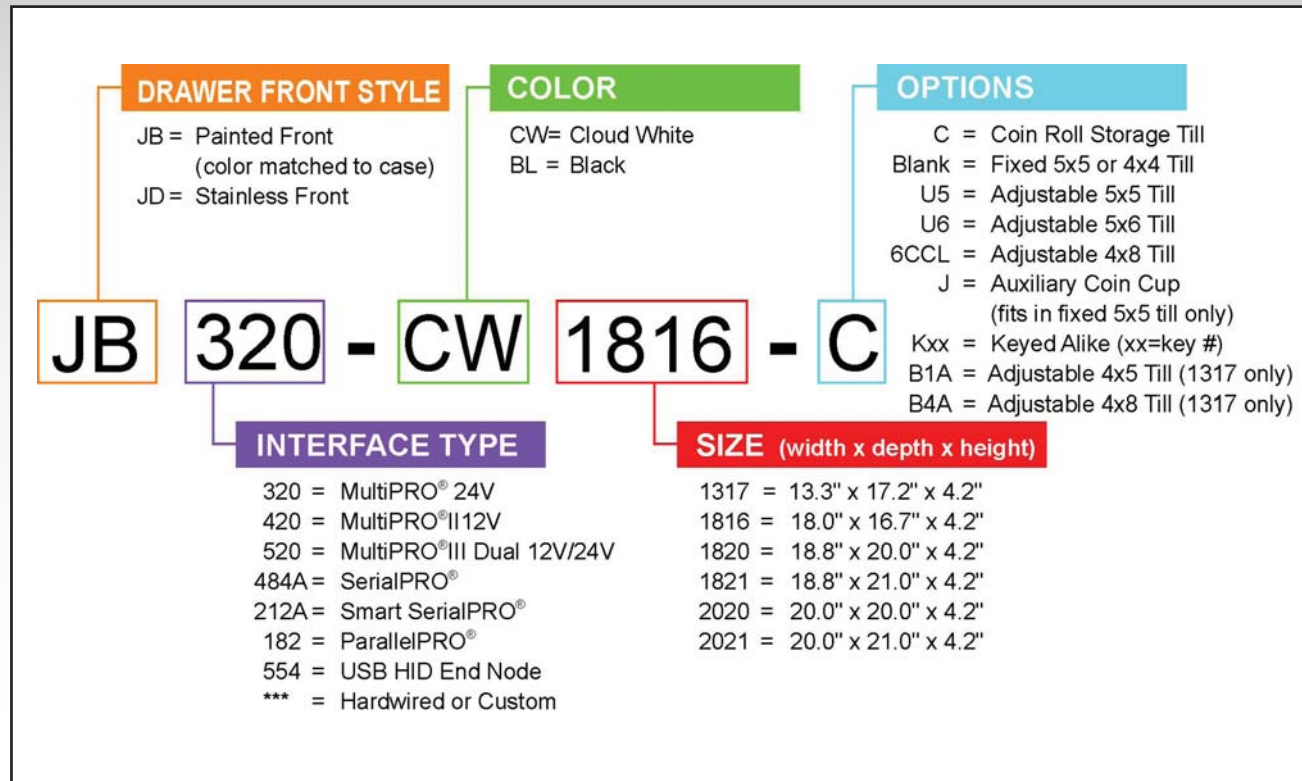
763.571.5000


APG CASH DRAWER®

Part Number Configurator

Each letter or number represents a characteristic of the drawer. Here's a sample of the Series 4000 part number:

[View our online part number configurator](#)



The recognized leader of superior quality cash drawers

Visit us at:
www.apgcashdrawer.com

763.571.5000



APG CASH DRAWER®

Integration Products

Integration products are the convenient and attractive solutions for organizing components and cleaning up the cable clutter of a POS workstation.



POS INTEGRATOR

[View Brochure](#)

- Riser lifts monitor and printer above the keyboard
- Ambidextrous printer tray
- Easy cable routing
- Fits the Series 100 16 x 19.5 drawer



CADDY SP

[View Brochure](#)

- Slim profile provides cable routing without extra height
- Only 1/2" added above drawer
- Optional printer tray is ambidextrous
- Sizes to fit on Series 100 16 x 16 or Series 4000 18 x 16 drawer



CASH DRAWER CADDY SYSTEM (WITH PC GARAGE SHOWN)

[View Brochure](#)

- 2 piece design makes cable routing easy
- Configurable keyboard area
- Optional PC Garage protects PC while providing ventilation and cable routing
- No fasteners required

The recognized leader of superior quality cash drawers

Visit us at:
www.apgcashdrawer.com

763.571.5000



APG CASH DRAWER®

Interfaces

Interfaces provide connectivity for the drawers to virtually any POS device (printer, terminal, ect...) in the industry.

PRINTER DRIVEN

- MULTIPRO[®] INTERFACE
A solenoid only connection to most receipt printers and terminals. A seperate cable makes the connection.
- DIRECTPRO[™] INTERFACE
A solenoid only connection to most receipt printers and terminals. This unit is hard wired for the specific printer or terminal.

COMPUTER INTERFACES

- USBPRO[™] INTERFACE
USB HID interface board
- SERIALPRO[®] INTERFACE
Intelligent serial interface
- SERIALPRO II[®] INTERFACE
Non-intelligent serial interface
- PARALLELPRO[™] INTERFACE
Intelligent parallel interface

All computer interfaces come with diagnostic lights for easy installation



[View Interfaces Brochure](#)
[View Connectivity Guide](#)

The recognized leader of superior quality cash drawers

Visit us at:
www.apgcashdrawer.com

763.571.5000



APG CASH DRAWER[®]

Accessories

Tills



Pounds



Euros



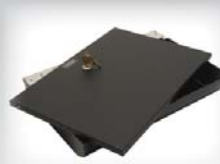
US Dollars



Canadian Dollars

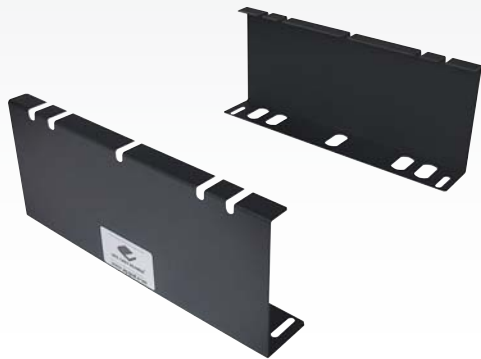
Tills for virtually any currency

Till Covers



Till covers for secure transferring of the till

UCMB's



Brackets for under counter mounting of the cash drawers

Weighable Coin Cups



Weighable coin cups to balance the drawer faster

[View Heavy Duty Accessories Brochure](#)
[View Standard Duty Accessories Brochure](#)

The recognized leader of superior quality cash drawers

Visit us at:
www.apgcashdrawer.com

763.571.5000

